

## INSTALLATION OF HI-TECH HOIST IN MONORAIL:

Hoist is installed in monorail from inboard end. Remove small retaining bolts in end of monorail, lift hoist with cable drum toward outboard end of monorail and slide rollers into track. Immediately replace retaining bolts to prevent hoist from rolling out of rear of monorail.

### **WARNING**

**DO NOT MOUNT HOIST ONTO TRESTLE MONORAIL UNTIL MONORAIL HAS BEEN PROPERLY SECURED**

After hoist is installed, be sure to install retaining pin or bolt in open end of track to prevent hoist from coming out.

## HOISTING:

Hoist must be attached to suitable source of electric power. All connections, plugs and cords must be a minimum of 12 gauge wire. All wiring must include a satisfactory ground. Portable generators must be rated at least twice the rating of the hoist. Low voltage will reduce the lifting capacity of the hoist considerably.

Do not use upper limit switch to stop upward travel of load. Use pendant control for all maneuvering of hoist.

### **CAUTION**

**Hi-Tech's hoist may not be used to lift people. No one should be allowed to stand or pass under the path of the suspended load.**

## COUNTERBALANCING

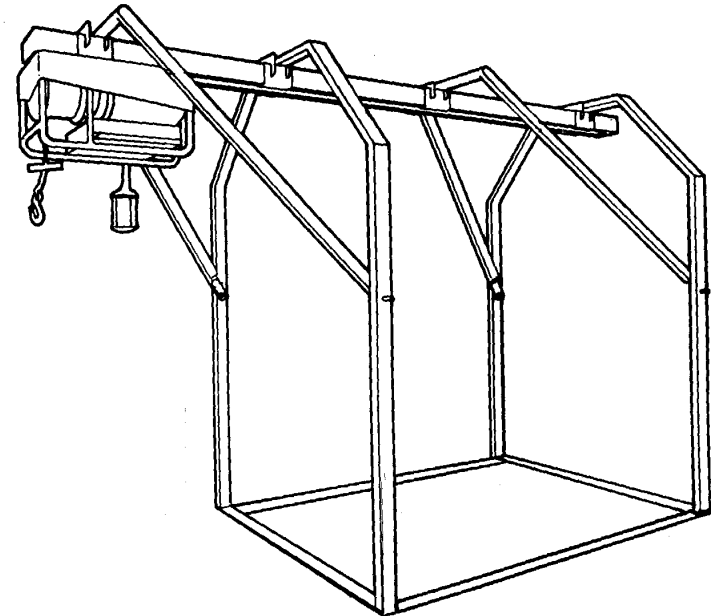
When the load is being raised at the outboard end of the monorail, the inboard end of the monorail actually has a LIFTING tendency. This tendency to lift is resisted by the weight of the counter weights.

Hi-Tech Hoist offers the PT-2 Ballast Containers which attach to the legs of the rear arch and can be filled with suitable material weighting a minimum of 3000 lbs., the PT-3 Ceiling Brace and the PT-4 I-Beam ballast brackets.

Except as stated herein, there are no implied warranties of fitness or merchantability, and there are no other express warranties beyond the warranties.

# PT-1 TRESTLE MONORAIL ASSEMBLY

## OPERATORS MANUAL



306 East Dr.  
Melbourne, FL 32904  
321-733-3387 Fax: 321-733-9433

# PT-1 TRESTLE MONORAIL ASSEMBLY INSTRUCTIONS

## INVENTORY:

A.	PM-1 Monorail	1 each
B.	Large Arch (Vertical Support)	2 each
C.	Small Arch (Angle Braces)	2 each
D.	Floor Braces	2 each
E.	Round U-bolts (w/ LW, HN)	4 each
F.	Square U-bolts (w/ LW, HN)	4 each
G.	½" x 4 " HHCS	4 each
H.	½" x 1 HHCS	4 each
I.	½" Flat Washers	4 each
J.	½" Nylox Nuts	4 each
K.	End Pin & Clip	1 each
L.	½" x 1 ½" HHCS (Caster Bolts)	8 each
M.	Decal: PT-1	2 each
N.	Decal: Hi-Tech Hoist	4 each
O.	Decal: 2000 LBS. Capacity	2 each
P.	Decal: For Material Use Only	2 each
Q.	Decal: Caution Anchor Unit	2 each
R.	Hardware Kit taped to inside of monorail	

**NOTE:** C & D above will be attached together with all necessary hardware.

- Lay monorail upside down so that W,X,Y, and Z mounts are facing down.
- Loosen bolts and nuts that attach angle braces to vertical supports.
- Invert one set of angle brace and vertical support. Slide beneath to W and X mounts of monorail. Bottom of vertical support is now sticking up. Note that angle brace attaches W mount with two rounded "u" bolts and vertical support attaches to X mount with two squared "u" bolts.
- Repeat for mounts Y and Z with other set of angle brace and vertical support. Ensure that angle brace is attached to Z mount.
- Vertical supports must be square to monorail. Monorail must be centered in support members. Tighten all "u" bolts and nuts.
- Turn assembly up right and install bottom braces to bottom rail of vertical supports so that bolts go through holes B and BB from top to fasten into anchor nut.
- Set assembly into place for leveling use on metal shims. (Shims supplied by end-user.)
- Torque all hardware to 15-20 foot pounds.

## PT-1 TRESTLE MONORAIL ASSEMBLY

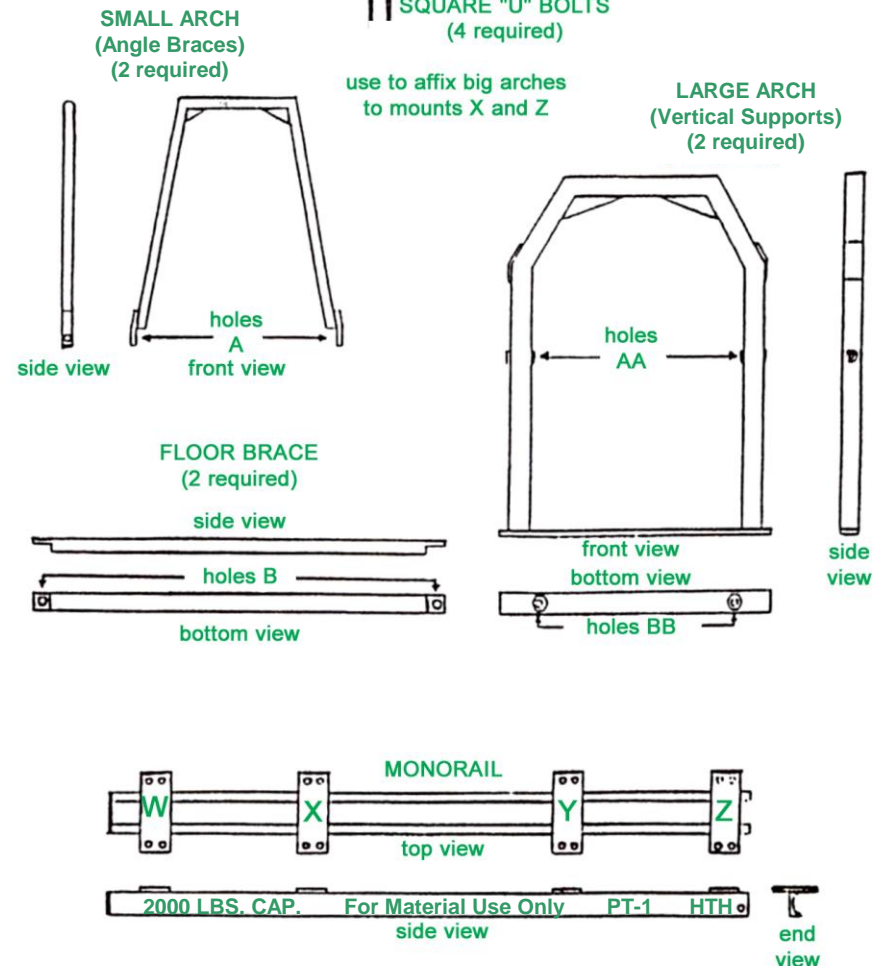
 ROUND "U" BOLTS  
(4 required)

use to affix little arches  
to mounts W and Y

 SQUARE "U" BOLTS  
(4 required)

use to affix big arches  
to mounts X and Z

LARGE ARCH  
(Vertical Supports)  
(2 required)



**CAUTION:**  
**INSPECT PT-1 ASSEMBLY BEFORE FIRST USE EVERY DAY  
 FOR PROPER INSTALLATION AND CONDITION.  
 CORRECT ANY DISCREPANCIES NOTED BEFORE  
 PUTTING INTO SERVICE.**