

# RP-3003

## RACK & PINION MATERIAL HOISTS

### *Heavy-Duty Large Load Capacity*

#### Standard Features

- » 3,000 lb Max Load Capacity\*
- » 400 ft Max Vertical Travel\*\*
- » 70 fpm Operating Speed\*
- » 60"W x 70"L x 48"H Clear Platform
- » 100% Duty Cycle
- » 230V / 3P / 60Hz / 30A\*
- » Dual 5-HP Brake Motors
- » Base Unit Weight: 1,675 lbs
- » Steel Construction
- » Soft-Start/Soft-Stop  
*Variable Frequency Drive for  
Smooth Acceleration and  
Deceleration*
- » Fast Acting Overspeed Brake
- » Safety Chains on Access Sides
- » Drop-down Ramps on Access Sides
- » Extendable Pendant Control
- » Water Tight Connectors
- » 5'H Tower Sections (Stackable)
- » Anchors to Building Structure  
*Use standard anchorage brackets or  
custom made brackets every 10-15'.*
- » Material Use Only

#### Many Options Available

\* Constant voltage is required to prevent damage and to maintain specified lift capacity and speed.

\*\* Consult a structural engineer for heights over 200 ft or when unsure of required anchoring.

Material Use Only - No Riders



Shown without  
optional ANSI  
Platform Enclosure



For more information contact us at:

**1-800-451-5053**

Ph: 321-733-3387 Fx: 321-733-9433

360 East Drive, Melbourne, FL 32904, USA

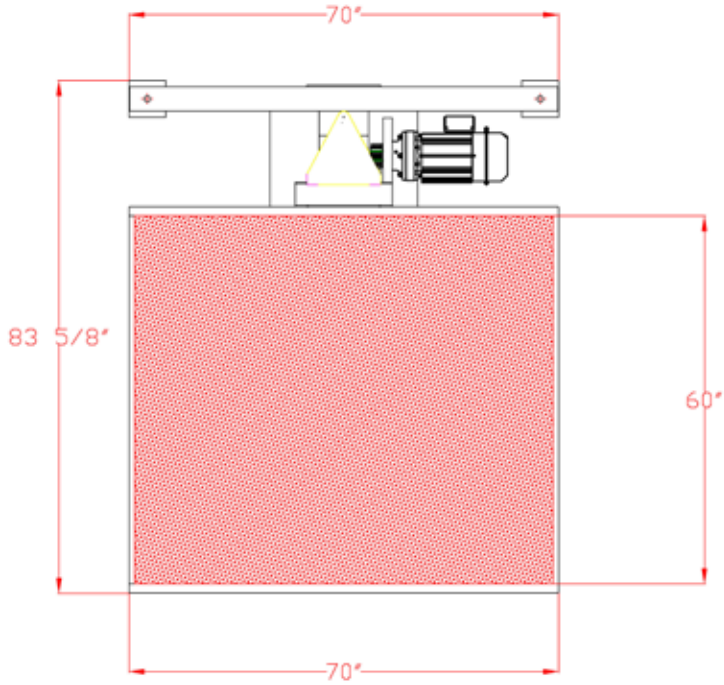
sales@hi-techhoist.com www.hi-techhoist.com

# RP-3003

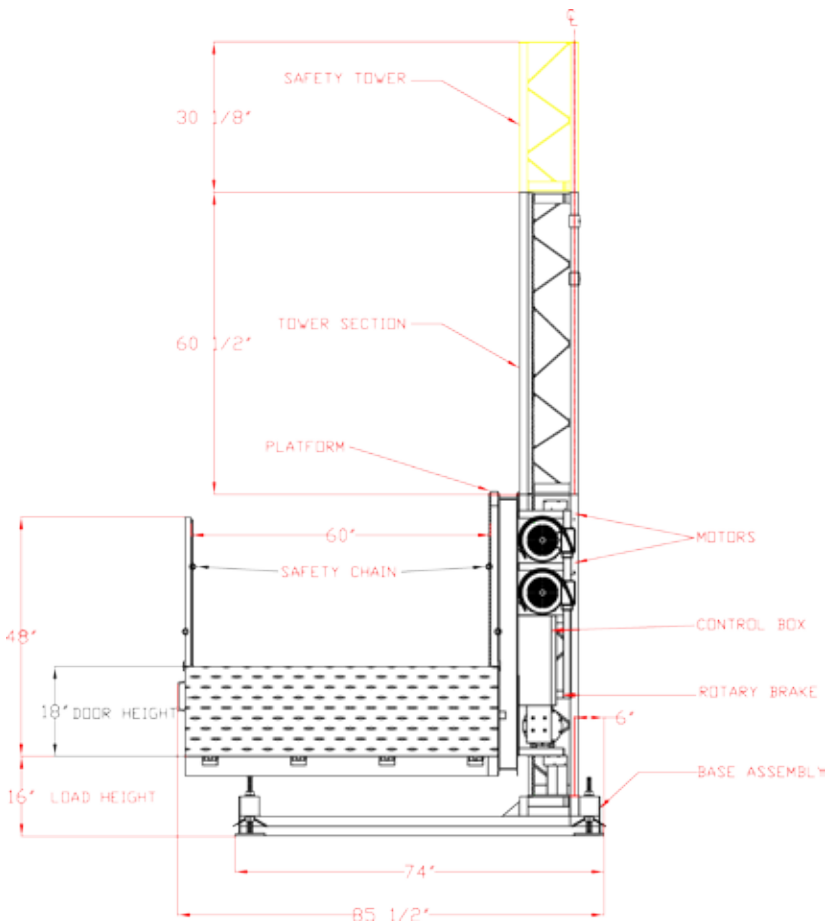
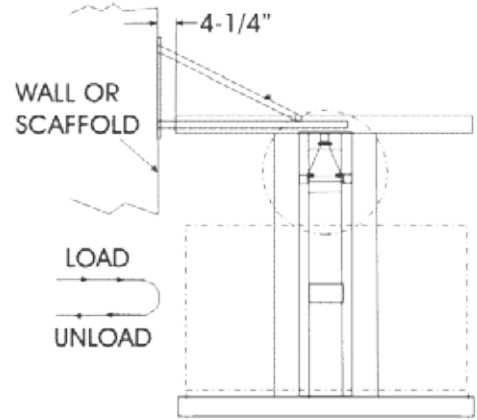
## RACK & PINION MATERIAL HOIST

Specifications subject to change without notification!

### GENERAL DIMENSIONS



### ANCHORAGE



Anchor  
10' - 15'

Anchor  
10' - 15'

Anchor  
10' - 15'

